

Pine Island

RESOURCE GUIDE



Pine Island Mayor David Friese

On behalf of the City of Pine Island, I want to give you a warm welcome to our city and all it has to offer for fun and activities. This community has a long and rich history, which makes it one of the most desirable places to live in the area. We embrace our long-time residents and welcome those looking to make Pine Island their new home.

The City of Pine Island is located in a tri-county area, including the counties of Goodhue, Olmsted, and Dodge. It provides our residents and guests with the opportunity to enjoy both urban and rural living. Our proximity to the City of Rochester and the Twin Cities makes it an ideal place for our citizens to work and have access to world-class edu-

cational institutions and entertainment. In Pine Island, our well-planned business districts and housing developments make it a desirable place to call home. With year-round festivals and events, abundant outdoor recreational activities, excellent schools, and historic downtown, Pine Island is a great place to do business as we look for opportunities to grow.

We are a community with a growing population that has a wealth of volunteers eager to develop and continue to improve our quality of life. We invite you to visit and experience our community as we look to a bright future and all that it has to promise!



Pine Island History Center

PinelIslandHistory.net



Pine Haven Care Center and Rehabilitation Center

PineHavenCommunity.org



Olde Pine Theatre

OldPineTheatre.com



Turkey Hill Orchard is located 5 miles south of Pine Island, about 20 miles Northwest of Rochester. Turkey Hill is a family owned you pick apple orchard, that offers apples, pears, plums, farm fresh eggs and artisanal goods such as apple butter. The orchard is open Labor Day weekend through the end of October.



www.facebook.com/turkeyhillorchard
9912 County Road 5 NW, Pine Island
(507) 259-2376

ADVERTISING SPONSORS

Active PT and Sports	12
Ameriprise, Pete Helland Financial Advisor	35
AR Auto Care	5
Bevcomm	41
Church of Saint Michael	45
Edina, Rod Steele	23
First American Insurance Service, Inc.	44
Frandsen Bank & Trust	48
Gar's Mobile Repair & Garage Service	43
Hermann, Grover & Company P.L.L.P.	44
Homestead Arts Farm	6
Island Fitness	29
Island Tire	17
Joel's Greenhouse	38
Jo's Coffee Truck	23
Lincoln Industries	43
LP Collision & Restoration	17
Mahn Family Funeral & Creamation Services ...	20
Meints Chiropractic & Wellness	34
Middle River Tree Service	33
Miss Angie's Place	41
Murphy Business Sales	13
News-Record	38
Nicole Mills Photography	10
Oak on the Water	26
Owens Locker Plant	5
People's Energy Cooperative	40
Pine Island Cheese Festival	14
Pine Island American Legion	16
Pine Island Area Chamber of Commerce	28
Pine Island Area Community Foundation	22
Pine Island Area Home Services	11
Pine Island Golf Course	12
Pine Island Hardware Hank Rental & Gifts	47
Pine Island Lions Club	32
PI Liquor	3
Pine Island Lumber	23
Pine Island Public Schools	8-9
Pine Island Sharing Shelves	34
Pine Island United Methodist Church	39
Pond View Barn, Rustic Event Venue	21
PTM, Progressive Tool & Manufacturing Co.	30
Real Broker, Randy Hoffarth	34
Ron's Auto Repair	40
Saint Paul Lutheran Church	4
Theis Printing	27
Thrivent, Jeff Lohmeyer	45
Tiarks Financial	38
Trailhead Grill & Lanes	7
Turkey Hil Orchard	2
Two Sisters	3
Van Horn Public Library	20
Whispering Trees & Honey Bees	15

The Pine Island Resource Guide is published by the Pine Island Area Chamber of Commerce with assistance from the City of Pine Island, Grimsrud Publishing, and Steve Theis Printing.



COME JOIN OUR TABLE!

A small family-owned restaurant that offers comfort food with unique style.



**Coffee Shop
Full-Service
Restaurant
Catering
Outdoor Patio**



**1251 Center Ave., Oronoco
507.288.9481**

Cafe Hours: Monday-Sunday 6 am-4 pm
Restaurant Hours: Tuesday-Thursday 11 am-10 pm; Friday-Sunday 8 a.m.-10 pm



**601 North Main Street
507-356-BEER**



Worship Sundays 9 a.m.

Pastor Marie Anderson

214 3rd Street SW, Pine Island

Office Hours: Monday-Thursday 9 a.m.-3 p.m.

507-356-8925

Email: saintpaulpi@yahoo.com

Website: <http://www.saintpaulpimn.org>



Look for us on Facebook:
SaintPaulPI



Livestream us on YouTube:
@saintpaulplutheranchurch497



Youth Group Instagram:
LevelUpSPYouth



Saint Paul

LUTHERAN CHURCH

P.O. Box 357 • Pine Island, MN 55963



OWENS LOCKER PLANT

Custom Beef and
Pork Processing

PINE ISLAND • 507-356-8612



Complete Service and Repair on Cars and Light Trucks

35+ years of experience

Certified Auto Care • Complete Repair and Maintenance Services

Computer Diagnostics • Tire and Brakes

Domestic and Foreign Autos • AC and Oil Service

Convenient Local Pick Up and Delivery

On-Car Module Reprogramming

507-356-2182 or 507-259-9536



51085 165th Avenue
Pine Island
507-250-6363

Family Fun on the Farm



Homestead Arts Farm is home to a beautiful herd of Huacaya alpacas. We host tours and events on the farm.

**OUR ALPACAS LOVE VISITORS,
SO PLAN YOUR TOUR SOON.**

The Homestead Blacksmith offers both group and private classes. Blacksmith group classes are offered through Rochester Community Education.

The Alpaca Store



**YOUR LOCAL
SOURCE FOR:**

Beautiful Alpaca Yarn
Alpaca Socks • Sweaters • Hats
Toys and Gift Items



Homesteadartsfarm.com



Follow us on Facebook at:

Homestead Arts Farm and Homestead Blacksmith



416 3rd Ave NE, Pine Island • 507-356-4200

**We have a
great Whiskey
selection!**

**Full Menu and Bar
with Table Service**

**16
draft beers
on tap!**

Bowling, Darts, Pool Tables, Sand Volleyball
Come for the food... stay for the fun!



Hours: Tuesday-Saturday 11 a.m.-10 p.m.;
Sunday 11 a.m.-8 p.m.; Closed Monday





Our Principals



16 Athletic Teams
(5 co-op with ZM)
25 Clubs & Activities



Spanish Immersion



Traditions



Innovative programs



Outdoor Learning



Early Learning





nicolemillsphoto.com



Office Hours:
Monday - Friday
9:00am - 2:30pm
507- 356-2999

website: pineislandareahomeservices.org

A non-profit agency that enlists local volunteers and professional staff to create a community of care and support for adults 65+ and their caregivers.

- Volunteer rides
- Meals on Wheels Delivery
- Chore services
- Newsletters
- Cubii rental
- Evidence based classes
- Knox Box
- Educational classes
- Home visits/ friendly visits



- Shopping Trips
- Exercise classes
- Chair Yoga
- Chair Volleyball
- Foot Care Clinic
- Flu Shot Clinic
- Blood Pressure Checks
- Dementia Friends
- Tax preparation

If you or someone you know could use our assistance, please contact us at: 507-356-2999 to become a client.

Mission Statement:

Provide volunteer and professional services to promote home-based living for adults 65+ in the Pine Island and Oronoco area.

Our mission is dedicated to helping people remain in their homes; where they really want to be.



Do you have time and talent to share and looking for a meaningful way to give back to your community? Consider volunteering and being a part of something bigger.



LIKE US ON FACEBOOK
VISIT PINE ISLAND AREA HOME SERVICES
TO LEARN ABOUT UPCOMING EVENTS
AND OFFERINGS.





507-356-8252

920 8th Street SE,
Pine Island

Andy Black, PGA
Will Lancaster, PGA
Nick Daak, GCSAA

- 18-Hole Regulation Course
- Driving Range
- Open to the Public
- Memberships Available

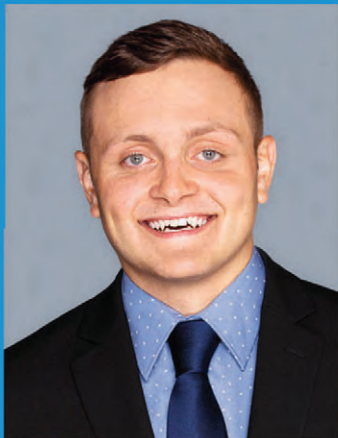


GREAT ONLINE SPECIALS

Find the best rates by
booking online at

www.pineislandgolf.com

**Our mission is to make sure you ALWAYS
have a great golf experience!**



JOHNNY SCHMITZ, PTA, Cert CMFA

Physical Therapist Assistant
Certified in the Clinical
Management of the Fitness Athlete



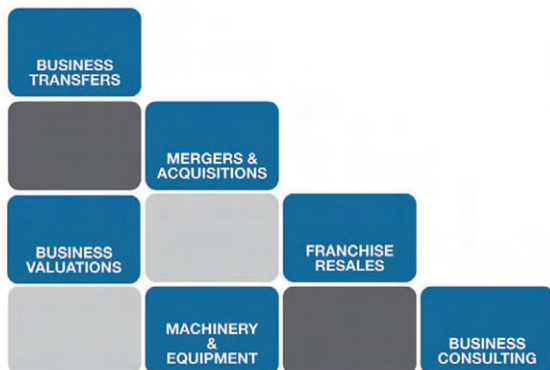
DREW SATHRUM, DPT, Cert. DN

Doctor of Physical Therapy
Certified in Dry Needling

ActivePT
and Sports
PHYSICAL THERAPY

ActivePTandSports.com

507-322-3460



Murphy Business is one of the largest and most successful business brokerage firms in North America with offices conveniently located throughout the United States and Canada. We provide our clients with purchasing, selling, acquisition, valuation, franchising, machinery & equipment appraisal/brokerage, and consulting services guaranteeing the highest level of professionalism in the industry. We promise you will not find a more complete, thorough and professional experience as the one Murphy Business can provide.

Selling a Business

Since we specialize in business transfers, you won't find a more qualified team of professionals to assist you. We have unlimited access to professional partners who can value your business correctly, ensuring it will sell quickly and for the right price. We also design a custom marketing plan, create an Offering Portfolio and maintain strict confidentiality.

Buying a Business

Our experienced brokers use the same care in helping match you to the appropriate business that we would if we were buying it for ourselves and through our global network of affiliations we have access to thousands of available businesses.

Business Valuations

A business valuation is an appraisal or determination of the value of the business or property based on current and historical data and establishes "Fair Market Value." We offer Brokers Opinion of Value, Certified Business Valuation and Board Certified Business Appraisal Reports.

Murphy Business of Minnesota, LLC

Jacob Petersen

507-262-6000

10642 County Rd 3 NW, Pine Island, MN 55963

j.petersen@murphybusiness.com





The First Outdoor Festival of the Summer



There are lots of activities for families including fireworks, a carnival, food vendors, craft vendors, a 5K Ribbon Run, fire department water fight, volleyball & pickleball tournaments, a raffle, an activities-filled Kid's Day on Saturday, a wine & cheese gala, and a pancake breakfast, plus contests and games. Outdoor street dance concert on Saturday night and don't miss the spectacular Grand Parade down Main Street on Sunday.





***Whispering Trees and Honey Bees U-Pick Farm
is a small, family-owned farm offering berries, flowers,
vegetables, herbs, eggs, honey, jam, and dried floral gifts.***

Open Memorial Day weekend
through the end of October.

Farm stand open seven days a week,
dawn to dusk.

U-Pick field open Saturdays 9am-5pm
and Sundays noon-5 pm.

Chalk wall and picnic area open
every weekend; tables and blankets
are available.

Weekly crafts throughout the
summer season and into fall.
Check our website for the calendar of
events and to sign up.



Website: whisperingtreesandhoneybees.com

Email: whisperingtreesandhoneybees@gmail.com

51599 Branch Trail Pine Island, MN 55963 • 507.961.3763

Follow us on:



Pine Island, Minnesota



Charles Cowden Post 184

The Pine Island, Minnesota American Legion is a Legion family not only consisting of American Legion members but also the members of the Legion Auxiliary, and Sons of the American Legion.

We are not a private club, we are open to the public and a family-friendly organization. Stop in, take a look, and spend some time with us.

We are located at 108 1st Avenue Southeast, Pine Island, just east on 2nd St. SE off of Main Street behind the Pine Island Sports Bar.

We have two large halls that are available for rent for events such as celebrations of life, weddings, meetings, parties, reunions, and more.

We will also cater for your event. Give us a call to find out the details and how to book your event. 507-356-8991

Our Post has a full bar which is also open to the public seven days a week.

We conduct many different types of events that help us support the local community such as Legion Baseball, high school scholarships, and providing the replacement flags for the local schools, cemetery, and much more.

And if you are a veteran and not a member please consider joining. Give us a call or stop by anytime. Our membership meetings are on the second Monday of each month starting at 6 p.m.

The American Legion is the largest U.S. veterans organization with more than 1.6 million members who strengthen the nation through programs, services, and advocacy for those who have served in the U.S. Armed Forces.

The American Legion is dedicated to inspiring leadership, good citizenship, and excellence in America's future leaders through a variety of youth programs.

The American Legion's scholarships provide financial assistance to high school students with exceptional academic and leadership qualities, including those participating in youth programs or connected to military service.

108 1st Avenue Southeast, Pine Island • 507-356-8991



www.pineislandlegion.org

Larry Pahl • Owner-Manager
Customer Satisfaction Guaranteed

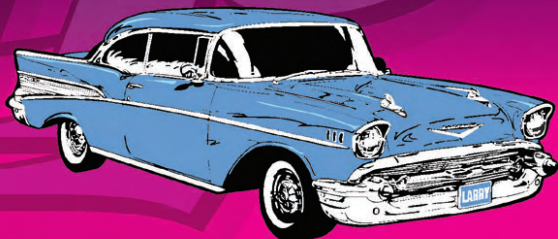
Work: 507-356-4029
Mobile: 507-421-8272
Fax: 507-356-2900

Web: www.lpcollision.com
Email: lpcoll@bevcomm.net



Collision & Restoration

12 County Road 11 NW
Pine Island, MN 55963



Complete Auto Repair and Body Shop Serving the Area.

We specialize in high quality collision and restoration.

ISLAND TIRE

QUALITY AUTOMOTIVE MAINTENANCE & REPAIR SERVICE

**ALIGNMENTS
FULL TIRE SERVICE
AUTOMOTIVE AND FARM**

LARRY PAHL

OWNER/MANAGER

507-356-4141



Pine Island Winter Fest

End of January — Ice skating open all day. X-country skiing, snowshoeing, and cardboard sled races at the golf course. Food and games throughout town.

Ice Rink

Located next to the Cheese Factory on East Center St. The warming house is in Butter Factory Building.



Pickleball Courts

Located next to the Cheese Factory on East Center St



Pine Island Aquatic Center

**311 SE Fifth St. • 507-356-4731
Zero Depth Entry, Diving Board, Showers, Restrooms**

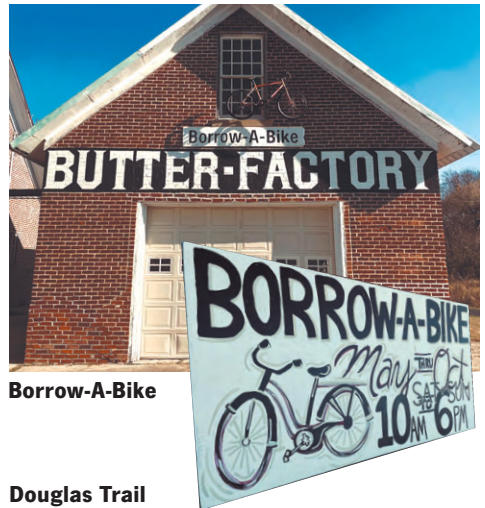
- * Swimming Lessons
- * Open Swimming
- * Lap Swimming & Water Aerobics
- * Pool Parties



Butter Factory - 101 East Center Street
Houses the Borrow-A-Bike program, and seasonal ice rink and pickleball courts located across the parking lot.



Douglas Trail



Borrow-A-Bike



Douglas Trail



Walking Trail between Douglas Trail and High School along the Zumbro River





1105 1st St NW, Pine Island
507-356-8558 • pipl@selco.info



The Van Horn Public Library serves the Pine Island area with books, DVDs, and other library materials. Library cards are free for all citizens of Minnesota. We also offer a variety of programs for all ages including:



- **One Town One Title** *February-March*. The library gives away over 100 copies of that year's book and has a slate of programs that tie in with the book's themes and topics.
- **Summer Reading Program** *June-July*. This annual program brings children, teens, and families into the library for reading and activities. Participants can do challenge sheets to earn prizes along with attending events that range from storytime, to arts & crafts, and programs led by a variety of professional performers like magicians or singers.

Visit us online at <https://pineisland.lib.mn.us>
and <https://www.facebook.com/VanHornPublicLibrary>.



Mahn Family

Funeral and Cremation Services

Mahler Chapel
209 NW 1st Ave.
PO Box 117
Pine Island, MN 55963
507-356-4620

Larson Chapel
1475 Jefferson Drive
Zumbrota, MN 55992
507-732-5444



Edina Realty®



Rod Steele
Your local professional
507-250-0846



TWO SISTERS KITCHEN + BAR

COME JOIN OUR TABLE!

A small family-owned restaurant that offers comfort food with unique style.



**Coffee Shop
 Full-Service Restaurant
 Catering
 Outdoor Patio**

**1251 Center Ave., Oronoco
 507.288.9481**

Cafe Hours: Monday-Sunday 6 am-4 pm
Restaurant Hours: Tuesday-Thursday 11 am-10 pm; Friday-Sunday 8 a.m.-10 pm

SPECIALTY COFFEE, TEA, CHOCOLATE, AND MORE!

Handcrafted Simple Syrups and Sauces.

*Wholesome Ingredients ...
 Inspired by Nature.*



507-301-1228

joscoffeetruck@gmail.com



Connect with us on
 Social Media!

“Coffee, Tea, & Community!”



JO'S
 COFFEE TRUCK





Would you like to invest in your community?

OUR MISSION:

To serve the Pine Island Area by supporting programs and projects that will help build a stronger community and improve the quality of life for current and future generations.

Goals of the Pine Island Area Community Foundation include:

- Support Economic Growth
- Support Youth and Education
- Support Community Projects and Activities
- Promote Local History

Donate at:

smifoundation.org/donations/pine-island-area-community-foundation

More information at:

facebook.com/PIAreaCommunityFoundation

Questions? Email PIACommunityFoundation@gmail.com
or mail PO Box 141, Pine Island, MN 55963

Have you thought about your legacy? Planned giving is a way you can help shape our tomorrow and assure yourself a place among those who can truly say...

"I was here; My life was important ... I made a difference."

All donations to the Pine Island Area Community Foundation are donations to a 501c3 public charity and are tax deductible as determined by the Internal Revenue Service.



Pond View Barn

RUSTIC EVENT VENUE

FAMILY FARM EVENT VENUE

23897 510th Street, Pine Island, MN 55963

Located at the home of Randy and Barb Kerkhoff

**10% OFF
WEDDING
PACKAGE**



*Kristin McCarthy
Photography*



**Contact us by phone/text
507.421.6443
or email us at
pondviewbarn@gmail.com**

Visit our website: www.pondviewbarn.com

BE SURE TO MENTION THE 10% DISCOUNT

PINE ISLAND CITY PARKS & TRAIL MAP

Northeast

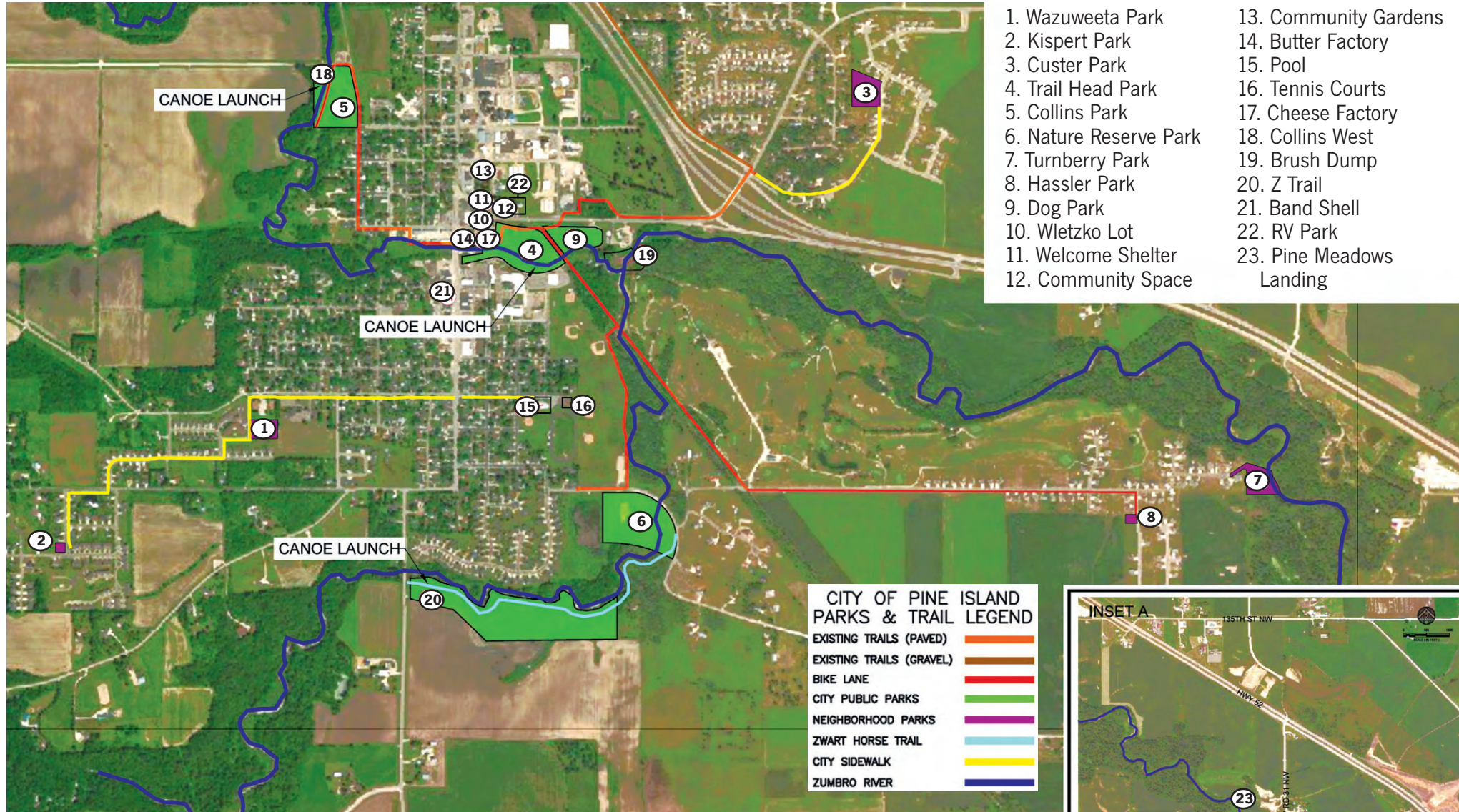
- 22. RV Park - 4 spots (electric and water hook-ups, sewer dump, picnic tables, trail access)
- 9. Dog Park - East of Center St and Trailhead Park - 101 East Center St (open running area, rivers edge, Trail Head access)
- 3. Custer Park - 450 Prairie View Drive (Playground, ball field, picnic tables)
- 10. Waletzko Lot - (shady picnic area)
- 12. Community Space - (ride share parking lot)
- 13. Community Gardens - (18 plots, 8 raised beds, rest area. Plots are one per family/organization on a first-come, first-served basis). To reserve a plot contact, Pine Island Public Works City Shop, 507-884-1653
- 19. Brush Dump - (compost, brush, dirt, wood mulch, leaves, wood logs).

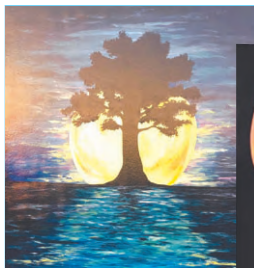
Southeast

- 20. Z-Trail - 1112 County Road 3 - one mile loop of hiking and horse trails, canoe launch, parking, picnic tables, and fishing.
- 8. Hassler Park - 828 20th Ave SE - features a playground.
- 7. Turnberry Park - 2182 Turnberry Lane (river access)
- 16. Tennis Courts - 311 SE Fifth St (parking lot) with room for two games.
- 23. Pine Meadows Landing - (canoe landing, fishing)

Southwest

- 2. Kispert Park - 868 10th Street SW - features a playground and room to run. Open year round.
- 1. Wazuweeta Park - 713 5th Ave (4 1/2 acres, Playground, 4 raised garden beds, seating)
- 21. Band Shell - Main Street Business District (seating, picnic tables)





Oak on the Water

www.oakonthewaterevents.com

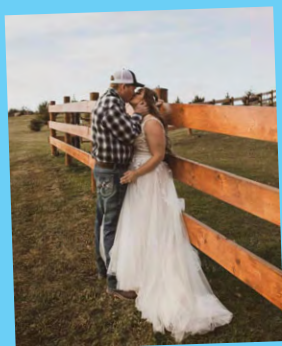
 Oak on the Water Events

Weddings, Birthdays, Reunions, Celebrations of Life, Photo Sessions, Anniversaries, and Graduations

- Comfortable Indoor Seating
- Scenic Outdoor Patio
- Large Ceremony Area



- Peaceful Country Setting
- Water Features
- Bridal-Ready Space




507-356-8780

OakontheWaterEvents.com

OakontheWaterEvents@gmail.com

Jim and Pennie Goplen

 Oak on the Water Events

Handicap Accessible 



City-Wide Garage Sale

Sponsored by
the Pine Island Area Chamber of Commerce
Last weekend in April
Building for rent from the city.



Flower Baskets

Every year in the spring the Pine Island Chamber of Commerce raises funds for 50+ flower baskets to adorn the light poles on Main Street in Pine Island, Trailhead Park, and the Welcome shelter area. The flowers add to the attractiveness of Main Street for many months throughout the summer and fall! If you are interested in helping make Pine Island beautiful this summer and want to donate, please send an email to piareachamber@gmail.com.

Pine Island Pioneers Amatuer Baseball
<https://minnesotabaseballassociation.org/teams/pine-island-pioneers>



Pine Island — White Pines Sportsman's Club
155 White Pine Road SE, Pine Island
www.piwpsc.org



THEISO

PRINTING INC

For All Your Printing Needs



For your next printing project

Call Steve

507-732-7547

Email: theisprt@hbc.com

OUR MISSION: To incorporate all Pine Island service, retail, manufacturing, and professional businesses and organizations in a cooperative effort to promote and enrich Pine Island.



Please join us on the second Tuesday of the month at noon at the Pine Island American Legion in January, March, May, July, September, October, and November for lunch and networking.

The Pine Island Area Chamber of Commerce supports the following projects each year:

- **Career Collaboration and Exploration with Pine Island High School**
- **Main Street Beautification; Hanging Flower Baskets**
- **Hosting the Welcome Booth at Cheese Festival**
- **Main Street Car Show**

Please support the PIACC members found in the chamber member directory online at pineislandmnchamber.com

pineislandmnchamber.com • piareachamber@gmail.com
507-356-8233 • PO Box 441, Pine Island, MN 55963

ISLAND



FITNESS



WANT TO *TOUR* OR READY TO *JOIN*?

Schedule an in-person appointment for a new membership or tour by calling, texting, or emailing



-  **24/7 Access**
-  **Infrared Sauna**
-  **Large Studio**
-  **Security Cameras**
-  **Large selection of strength equipment**

 **119 S. Main St. Pine Island**
 **507.421.6513**
 **islandfitnesspi@gmail.com**





Progressive Tool & Manufacturing Company

CELEBRATING 55 YEARS!

*PTM celebrates 55 years of business in the fall of 2025.
PTM has evolved over the years to become a
Contract Manufacturer.*

**Producing Plastic Injection, Sheet Metal Fabrication, and
CNC Tooling Support for our ever-expanding customer base.**

**We specialize in servicing various types of companies,
producing high quality manufactured parts.**

**We have also been a faithful supporter of the Pine Island
community and the surrounding area.**

**Our team of dedicated employees and loyal customers
has made this milestone possible.**

**Progressive Tool & Manufacturing, Inc.
290 5th Street NE, PO Box 668
Pine Island, MN 55963
507-356-8345
www.ptmmn.com**

Monday-Friday 8 a.m.-4 p.m.

Government Services

Brush Dump Facility

Pine Island Public Works City Shop
507-356-8545

The Brush Dump is a free service for Pine Island residents (only) that is open from May through Fall (weather permitting) to drop off or take: brush, compost, dirt, mulch, leaves, and logs

The Recycling Center & Brush Dump are located on East Center Street between Trailhead Park and the Water Treatment Plant Pine Island MN

Public Works

Park & Street Maintenance, 507-356-8545
Water or Sewer Information, 507-356-4390



City Wide Cleanup

Cleanup day is typically a Saturday in May at the Public Works Shop 502 3rd Ave NE

Economic Development Authority



Pine Island is a vibrant and growing community that perfectly balances small-town charm with big opportunities. Conveniently located along Highway 52, Pine Island provides quick access to Rochester and the Twin Cities, making it an ideal location for businesses seeking connectivity without the congestion of larger metropolitan areas.

Pine Island is home to a skilled workforce, driven by its proximity to world-class institutions like the Mayo Clinic and the thriving industries of southeastern Minnesota. With a strong agricultural heritage, a growing tech and manufacturing presence, and a supportive local government, businesses in Pine Island benefit from a pro-growth environment designed to help them succeed.

Pine Island offers an exceptional quality of life. Our community is known for its top-rated schools, beautiful parks, and scenic outdoor spaces, making it an attractive place for families and employees to live and work. Residents enjoy a welcoming atmosphere, safe neighborhoods, and year-round recreational opportunities, from hiking and biking to fishing and golfing.



Van Horn Public Library

115 3rd Street SE, Pine Island, MN 55963
507-356-8558 • pineisland.lib.mn.us/
Books, internet access, multimedia
Adult and children programming



City Hall

Mon-Fri, 8-4:30, 507-356-4591
info@ci.pineisland.mn.us
Meeting the third Tuesday at 6 p.m.

Emergency Management

Flood Mitigation and Emergency Response
Emergency Operations Center located at
Pine Island Fire Department.

DMV

Mon-Fri, 8-4:30, 507-356-4904
Driver License Renewals, Title Transfers,
DNR Registrations, and More

Pine Island Lions Club

The Pine Island Lions Club is a fellowship of men and women who serve the needs of our community through Service Projects and Fundraising events. Our membership consists of families and individuals ranging in ages from 20 to 80.

Transportation

Hiawathaland Transit
in Pine Island

To schedule a ride, please call our dispatch center between the hours of: Monday-Friday: 5:30-6:00 and Saturday 7:30-4:00.



Pine Island Lions Club

We Serve



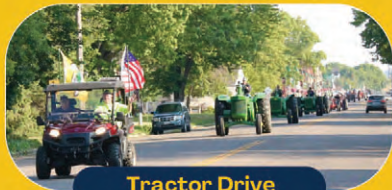
PI Fly Your Flag



Community Clean Up



Breakfast with Santa



Tractor Drive

Our motto is “We Serve” and Lions put it into action every day. We’re caring men and women who come together to be the difference in our communities. We believe we can do so much more together than we can alone.

Whether we are taking care of our community by cleaning ditches or picking up bulk trash, serving our community at events like the Tractor Drive or Breakfast with Santa, or funding local businesses, agencies, community and school groups, Pine Island Lions members aim to serve our community in a variety of ways.

The PI Fly Your Flag program kicks off in May and our Tractor Drive is coming up in August. Check out our Facebook page or email us for event and sign-up information!



www.facebook.com/pilionsclub



pineislandlions@gmail.com



PO Box 458, Pine Island MN 55963

JOIN TODAY

**Middle
River
Tree Service**
507-322-4336



OUR SERVICES:

TREE REMOVAL ✓

TREE TRIMMING ✓

STUMP GRINDING ✓



**Call (or Text)
For Your
FREE
Estimate**

507-322-4336

middlerivertreeservice.com

Randy Hoffarth
507-259-0351

real



**Real
Broker, LLC**
RandyHoffarth.com
RandyHoffarth@gmail.com



**Meints Chiropractic
& Wellness PA**

EST. 1984

**Dr. Ezra Schlotthauer
Dr. Kayla Baldwin Schlotthauer**

Adults • Children • Infants • Athletes

507-356-4014

500 South Main Street • Pine Island

PINE ISLAND SHARING SHELVES

OPEN EVERY WEDNESDAY and **2ND AND 4TH TUESDAYS**
9:00 - 11:00 am 5:30 - 7:00 pm

611 North Main Street, Pine Island
pisharingshelves@gmail.com • 507-722-1331

Monetary donations can be mailed to:
PO Box 145 Pine Island MN 55963-0145

**We gratefully accept
non-perishable grocery and
monetary donations.**

Easy to apply, no income
eligibility requirements.

Please stop by to check us out!

The Pine Island Sharing Shelves is an organization of community volunteers. The goal of the Sharing Shelves is to encourage good nutrition, provide food for those in need, provide food in emergency situations, and provide information about food assistance available through other agencies.

In accordance with Federal law and U.S. Department of Agriculture policy, this institution is prohibited from discriminating on the basis of race, color, national origin, sex, age, or disability. (Not all prohibited bases apply to all programs.)



PINE ISLAND



**SHARING
SHELVES** 



Wealth Management Solutions

A private wealth advisory practice of
Ameriprise Financial Services, LLC

PETE HELLAND

Financial Advisor



MY PRACTICE

You may have many goals ahead — retirement, education, family events, travel — or be focused on a single need like saving for a new home. I tailor our advice to my client's goals and go beyond just investments to help them feel more confident across their full financial life.

Throughout the year, I help navigate the present while staying focused on my client's long-term goals. We analyze markets and the economy and monitor changes to taxes and legislation. As my client's needs change, I work with them to reevaluate their goals and update their overall financial strategy, always based on their time horizon and risk tolerance.

My focus is on providing my clients with trusted advice and outstanding service so they can achieve their goals today and in the future.



CONTACT INFORMATION



peter.helland@ampf.com



104 S Main St
Pine Island, MN 55963



Call: (507)356-8989
Text: (507) 512-7918

WEBSITE



Forbes/SHOOK Research listings are based on data compiled by many of the nation's most productive advisors, selected by their firms, which is then submitted to and judged by SHOOK Research. Key factors and criteria include: assets under management, revenue produced over a three-year period, regulatory and compliance record, and credentials/years of professional experience. Portfolio performance is not a factor. This award is not indicative of this advisor's future performance. Neither Forbes nor SHOOK Research receives compensation in exchange for placement on the ranking. Wealth Management Solutions is a private wealth advisory practice of Ameriprise Financial Services, LLC. Ameriprise Financial cannot guarantee future financial results. Investment advisory products and services are made available through Ameriprise Financial Services, LLC, a registered investment adviser. Ameriprise Financial Services, LLC, Member FINRA and SIPC. Not FDIC or NCUA Insured | No Financial Institution Guarantee | May Lose Value © 2025 Ameriprise Financial, Inc. All rights reserved.



Parks & Recreation

Pine Island has wonderful parks and paved trails to enjoy from a casual stroll to a fun game of pickleball.

Trailhead Park

101 East Center Street

Features a pavilion, playground, horseshoe pits, open space, bathrooms, electricity, and water fountains. Canoe launch access, and also the start of the Douglas Trail, a 12.5 mile paved trail that ends in Rochester. Available for rent.



420 3rd Ave NW
Thursdays 4-7 at the Trailhead Park
Runs June - October



Trailhead Playground



Pine Island

Wa-zu-wee-ta "Isle of Pines"

Prior to settlement, southeastern Minnesota was part of the tribal homeland of the Mdewakanton branch of the eastern Dakota Nation. The area west of the junction of the two branches of the Zumbro River to the bluff held a large grove of white pines surrounded by hardwood forest. The pines stood out like an island and was a favorite winter camp site called Wazuweeta "Isle of Pines" by the Dakotas. It was taken for settlement by the Treaty of Mendota in 1851 and named Pine Island by the settlers.



The first settlers at Pine Island were Josiah Haggard and H. B. Powers in 1854. A sawmill and Post Office were established in 1856. The white pines yielded 200,000 board feet of lumber.



Erastus Dennison, John Chance, Moses Jewell and M. Woodley had the town site surveyed into lots. The plat of Pine Island Village was recorded in March of 1857.



The business district grew by serving the surrounding agricultural area, starting with small grains and cattle, and shifting to dairy about 1900.



The first railroad, the Chicago Northwestern, was built in 1878 from Rochester to Red Wing. In 1902 the Chicago Great Western built a parallel line from Rochester to Zumbrota that is now the Douglas Trail.

In July of 1911 a group of small dairies cooperated to build a Prize Winning World Record 6,000 lb Cheese on a railroad flatcar.



By 1920 there were 43 cheese plants in the surrounding area. Half of them combined to form the Minnesota Cheese Producers Association with a large plant in Pine Island. It, and the adjoining Butter Factory, are part of this park just West of where you stand. In 1947 an even larger plant was built two blocks to the North.

History and pictures by the Pine Island Area Historical Society 2010 GMS



**Annuals • Perennials • Seeds
Water Plants • Garden Vegetables
Herbs • Gardening Supplies
Accessories • More**

JOEL'S GREENHOUSE

507-356-4041

www.joelsgreenhousepi.com



Unique Service and Selection

North of Pine Island on Hwy. 52 to 490th Street, then 1 mile west.

FOLLOW THE



**IN THE SPORTS PAGES
OF THE**

NEWS-RECORD

Subscribe at Grimsrud Publishing, Inc.
225 Main Street / PO Box 97 / Zumbrota
Phone: 507-732-7617

Website: PinelandRecord.com



WE ARE HERE TO MAKE YOU FEEL CONFIDENT IN YOUR FINANCIAL FUTURE.

**Retirement, Trusts,
Probate,
Charitable Giving,
Estate Planning,
Tax Planning,
and Medicare**



Focusing on Retirement

218 South Main Street, Pine Island • 507-356-8537



Pine Island United Methodist Church

Sharing the love of Jesus,
offering hope to those looking for more,
and creating a place where everyone
can feel like they belong.



Pine Island Baby Closet

Baby Closet

"Helping families with children ages up to 15 months with diapers and other needs."

L.O.V.E. Project

Serving area children and families who are in need by providing gifts and assistance at Christmas time and throughout the year.



PINE ISLAND



**SHARING
SHELVES**

Sharing Shelves Food Shelf

We founded our local food shelf, which has now grown to be their own organization.

Harvest Home Dinner

An annual dinner to raise fund for local groups and ministry.

HARVEST
HOME CELEBRATION

We offer:

- Small groups and fellowship activities - sharing connections and laughter
- Sunday School and Vacation Bible School
- Meeting space for groups such as Boy Scouts, Girl Scouts, 4-H, TOPS, Al Anon, and Grief and Support Groups
- Baiwalla Mission - a school and community ministry in rural Sierra Leone

Pine Island United Methodist Church
200 North Main Street
Pine Island, MN 55963
507-356-4553

Join us for worship
9:00 am Worship
10:00 am Sunday School

www.piumc.org

Making disciples of Jesus Christ for the transformation of the world.





People's Energy Cooperative

Your Touchstone Energy® Cooperative 

1775 Lake Shady Ave S, Oronoco, MN 55960 • (800) 214-2694 • www.peoplesenergy.coop

This institution is an equal opportunity provider, employer, and lender.



- Computer Diagnostics
- Engine Repair/ Rebuild
- Wheel Alignment
- Exhaust
- Brakes
- General Repairs



*See Us For
All Your Auto
Repair Needs*

66 5th St. NE, Pine Island • 507-356-8700



507-251-3684

angie@missangiesplace.org

@missangiesplace

www.missangiesplace.org

A 501c3 nonprofit specializing in fostering positive relationships through **Art, Nature, Education and Well-Being**. We are committed to providing an inclusive and welcoming environment for all members of our community.

Let's Connect!

We offer a variety of programs for children ages 0-115. Check us out for camps, art classes, yoga, community events, classes and programs.

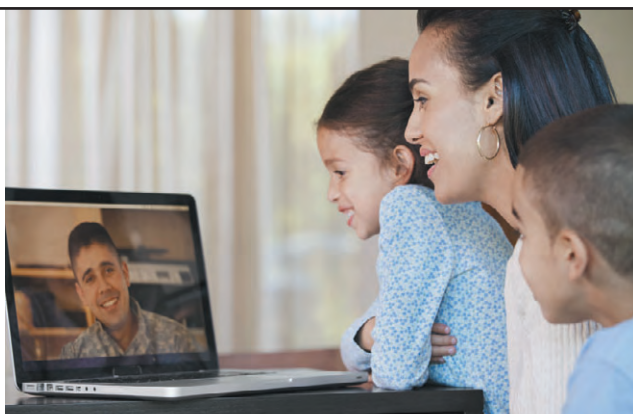
208 N Main St
Pine Island, MN 55963



Internet

TV

Phone



Bevcomm has a strong commitment to the community. Offering local and long distance phone service to high speed internet access, Digital TV and customized business services.

Communities are built on connections.

Bevcomm®

108 2nd Street SW, Pine Island • 507-356-8302
Monday-Friday 8 a.m.-5 p.m.



**Welcome Shelter - 106 1st Ave. -
Shelter, picnic tables, informational signage**



Pine Island Cemetery
Lot information and pricing available at pineislandmn.gov/cemetery.



Pine Island Community Gardens
To reserve a plot contact, Pine Island Public Works City Shop, 507-884-1653



Pine Island was given its name from the Native American term "Wa-zu-wee-ta," which translates to Isle of Pines. Located along the beautiful banks of the Zumbro River.



The world's cheese capital
In 1911 a group of small dairies built a prize-winning, world-record 6,000 pound cheese on a railroad flatcar. By 1920 there were 43 cheese plants in the surrounding area. Half of them formed the Minnesota Cheese Producers Association with a large plant in Pine Island. That plant and its adjoining Butter Factory were located across from Trailhead Park.



Pine Island Business Park
Lots and acreages, various sizes — zoned industrial

MAKING GREAT BRANDS BETTER



Lincoln Industries is the largest and most diverse privately-held metal finishing company in North America. We develop technical solutions that move our customers forward by bringing their visions to life.



67 5th Street NE, Pine Island • 507-356-8322



Gar's Mobile Repair & Garage Service



204 5th St. NW, Pine Island
Shop 507-356-8632
Mobile 507-254-0018



We Sell Most Brands of
Passenger, Light Truck and Ag Tires

- Gas and Diesel Engine Repair
- Truck D.O.T. Inspections
- Automotive and Small, Medium, Heavy Truck Diagnostics
- Small, Medium, Heavy Truck and Trailer Service and Repair
- Portable On-Site Repair with Gas and Electric Welding
- All Farm Equipment Service, Repair, Parts and Accessories
- We Make Hydraulic Hoses and Battery Cables
- Mobile On-Site Repair



611 North Main Street, Pine Island
(507) 356-2088

Serving Pine Island since 2007

E-Mail:

Jeanne@FirstAmericanMN.com

Taylor@FirstAmericanMN.com



Give us a call to discuss
the options we have for your
automobile, homeowners,
recreational vehicle,
business, farm or life insurance.



Building and managing wealth for your business and family

- Personal and Business Taxes
- Accounting Services
- Payroll and Payroll Taxes
- QuickBooks Support



**HEMANN, GROVER
and Company, LTD**
Certified Public Accountants

404 Main Street, Zumbrota • 507-732-7800

Church of St. Michael

451 5th Street SW
Pine Island, MN 55963
507-356-4280
www.stpaulstmichael.com

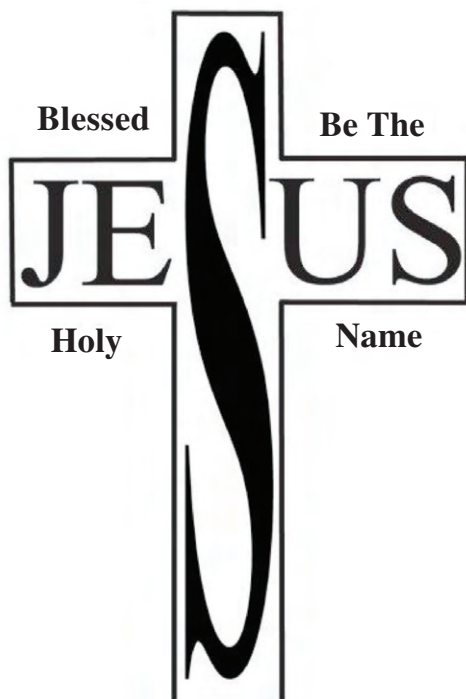


Holy Mass times:

Saturday: 5:00 PM

Sunday: 7:00 (Latin) & 10:30 AM

Wednesday & Friday: 8:30 AM



A Catholic parish of the Archdiocese of St. Paul/Minneapolis

thrivent

Financial guidance for wherever life takes you

At Thrivent, we believe money is a tool, not a goal. As a holistic financial services organization owned by our clients, we're here to help you achieve financial clarity and make the most of all you've been given.

Anytime you'd like to explore your financial goals, I'm here to help. Reach out when you're ready to get started.



Jeff Lohmeyer

Financial Advisor
120 S Main St
Pine Island, MN 55963
507-356-4009
jeff.lohmeyer@thrivent.com



Advice | Investments | Insurance | Banking | Generosity

28304 R4-24



Custer Park Pavilion - 450 Prairie View Dr.
Features playground, ball field, and picnic tables.



Middle Branch of the Zumbro River view from the bridge. Walk or bike beside, canoe or fish the river.

New Fenced Dog Park — Coming 2025

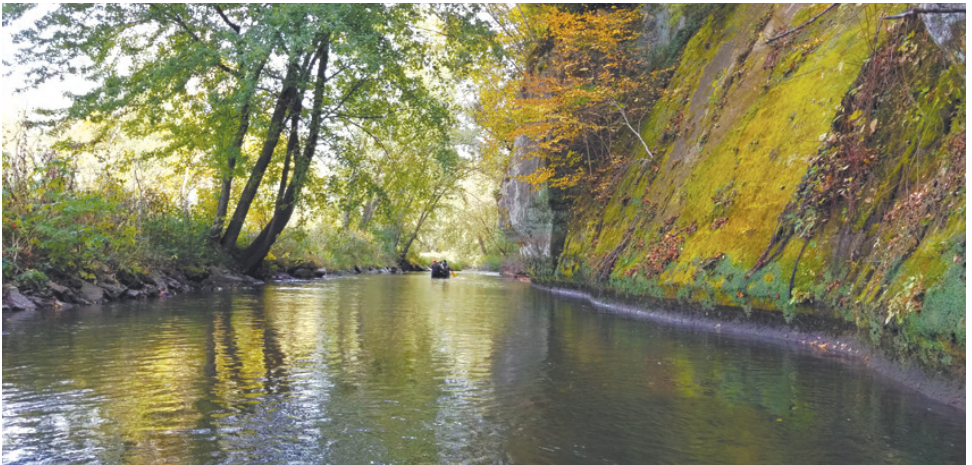
Check the Park and Trails map for:
22. RV Park (4 spots available to rent)
20. Z-Trail (one mile loop of walking and horse trails).



Collins Park - 420 3rd Ave NW
Available for facility rental (online pineislandmn.gov). Features playground, restrooms, picnic tables, parking lot, and nature walk, canoe launch, fishing, woods, and trail system access.



Nature Preserve - 8th St SE
The pond features a fishing dock and a natural trail around the pond. Swimming is not permitted.



Canoe launches located at Trail Head Park, Collins Park, Bridge View Landing

**Come in and
check out our great
GIFT
SECTION**

**Candles • Pictures
Jewelry • Home Decor
Puzzles • Outdoor Decor
MUCH MORE!**

GIFT CARDS AVAILABLE



HANK'S RENTAL CENTER

SAVE TIME! SAVE MONEY!

Check out Hank's Rental Center for all your rental needs!



25% OFF Any Rental Item

**Cotton Candy
Maker**



Inflatable Bouncers



Aerator



Barretto Track Trencher

**30" Down
6' Trench**



**Garden
Tiller**

Coupon must be presented when equipment is rented. Limit one coupon per customer. Not valid in conjunction with any other offer. Coupon cannot be used to purchase merchandise. Not redeemable for cash. Valid at Pine Island Hardware Hank only.

HARDWARE HANK™

Rental & Gifts

201 South Main Street, Pine Island • 507-356-4431

Hours: Monday-Friday 8 a.m.-7 p.m.; Saturday 8 a.m.-6 p.m.; Sunday 10 a.m.-4 p.m.

Proud member of the
Pine Island Area Chamber of Commerce





BIG BANK SERVICES SMALL BANK APPEAL

PERSONAL & BUSINESS BANKING

- Advisory banking
- Checking
- Savings
- Credit cards
- Atm & debit cards
- CDs & IRAs
- Health savings
- Online banking
- Mobile banking
- Remote deposit
- Bill pay
- And so much more ...

LOANS

- Purchase or refinance
- Consumer loans
- First-time home buyer
- Construction loans
- Home improvement loans
- Home equity line of credit
- Cabin loans
- Land mortgages
- Government guaranteed (FHA / VA / RD)
- SBA / FSA / FarmerMac

FRANDSEN BANK & TRUST



Member FDIC

Pine Island
507.405.2423

Zumbrota
507.361.6099

CA030823

**Real People.
Real Results.**



NMLS 718070
FrandsenBank.com